

# Quick Start Guide

## SST Range 5-Way Stackable Charging Cradle

QSG-SST-Range-5-Way-  
Stackable-Charging-Cradle-Rev 1.0|  
21.10.2024|  
EN

### CAUTIONS & BEST PRACTICES

- If the SST Range 5-Way Stackable Charging Cradle appears to be damaged or is not functioning in the correct way, then please get in touch with WatchGas or a local representative.
- For indoor use only.
- Servicing can only be carried out by a WatchGas office or trained service technician.
- Warranty does not cover electrical shock or mechanical shock and/or water damage.

### WARNING

#### IMPORTANT SAFETY INFORMATION: READ BEFORE USE

- To ensure personal safety, read Safety Information and Warnings before using the SST Range 5-Way Stackable Charging Cradle.
- Use the SST Range 5-Way Stackable Charging Cradle only as specified by the manufacturer. Failure to do so may impair protection provided by the SST Charging Cradle.
- Follow all required National Electric Codes (NEC) and safety codes.
- Do not attempt to adjust, disassemble, or service the equipment.
- Only use in a well-ventilated space, in normal atmosphere, 20.9% Oxygen and non-hazardous environment.

#### PREPARE FOR USE

Use with charger P/N SST-5WSSC-CHR (purchased separately).

The charger supports up to four SST Range 5-Way Stackable Charging Cradles.

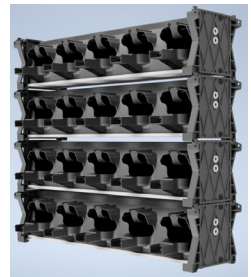
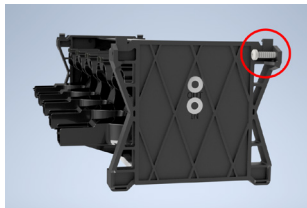
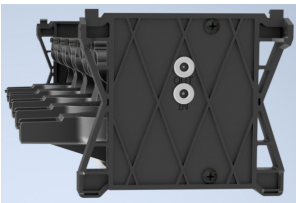
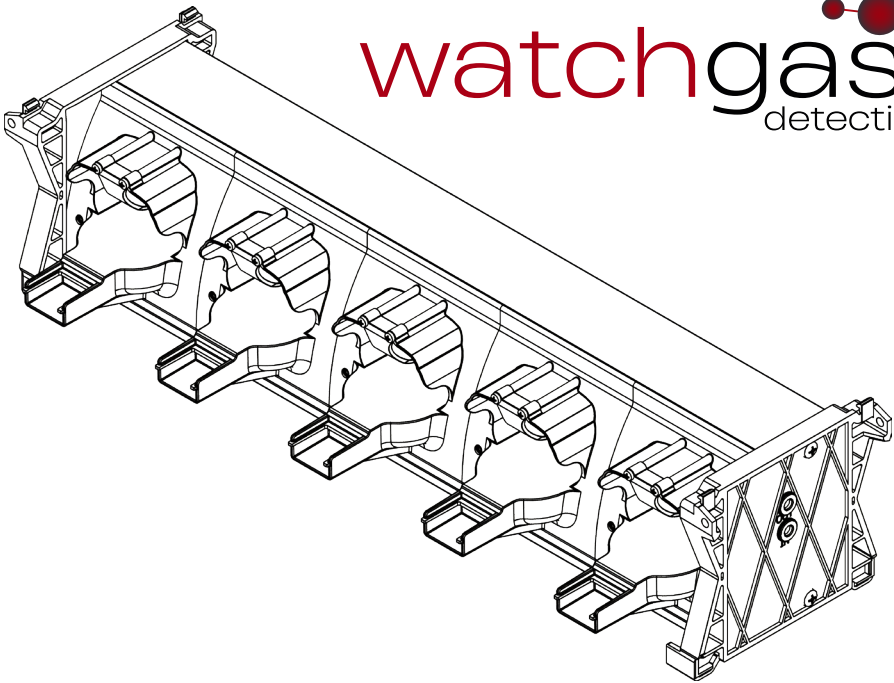
For stacking multiple SST Range 5-Way Stackable Charging Cradles, use the link cable P/N SST-STACK-COU (purchased separately). The power supply is connected to inlet and link from OUT to IN.

Connect the adapter to main power.

The charger will now blink red-green-red to indicate correct function.

After connecting, place up to five SST4/5 units that need charging into the 5-Way Stackable Charging Cradle.

While charging the LED will be red, when fully charged the LED will change to green.



Connect the SST-5WSSC-CHR charger to the IN port. Only use the SST Range 5-Way Stackable Charging Cradle in combination with the SST-5WSSC-CHR charger.

Mount the Charging Cradle to a desk or wall using the recommended 4.8mm mounting screws. **NOTE:** it is also possible to charge the SST4/5 in the upright position.

Stack and link up to four Charging Cradles with the SST-STACK-COU link cable. Connect from the OUT port to the second Charging Cradle's IN port.

**Dimensions (LxWxH):** 500mm x 160.5mm x 111.5mm/  
19.68 x 6.31 x 4.38 in

**Weight:** 1.45 Kg/ 3.19 lbs

**Operating Temperature:** +0-35 °C/ 32-95 °F

**Humidity:** 10% to 90% RH

**Storage Temperature:** 0-50 °C/32-122 °F

**Power Supply:** 15V DC 6.0A

**Device Compatibility:** One module compatible with SST4 Micro, SST4 Mini, SST4 Pump, and SST5.

**Warranty:** 2 Year warranty

**FOR MORE INFORMATION**

[www.watchgas.com](http://www.watchgas.com)

[info@watchgas.com](mailto:info@watchgas.com)

**EMEA**

Klaverbaan 121

2908 KD

Capelle aan den IJssel

The Netherlands

**APAC**

Woods Square Tower 1,

12 Woodlands Square,

#11-71, Singapore 737715

**Americas**

313 N. State Hwy 342

Red Oak, TX 75154

[www.watchgasusa.com](http://www.watchgasusa.com)

[info@watchgasusa.com](mailto:info@watchgasusa.com)

**ANZ**

[aus@watchgas.com](mailto:aus@watchgas.com)