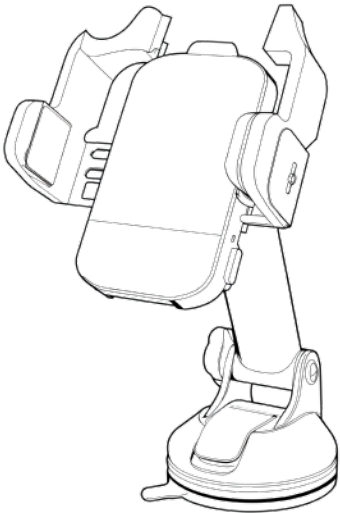


USER  
MANUAL

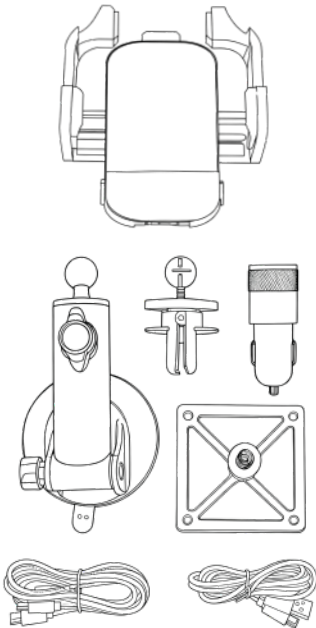
Wireless Car Charger

P/N: SST-CAR-CHG

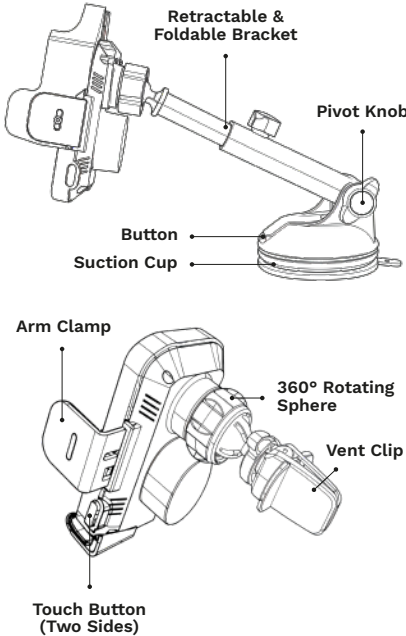


01

PACKAGE CONTENT



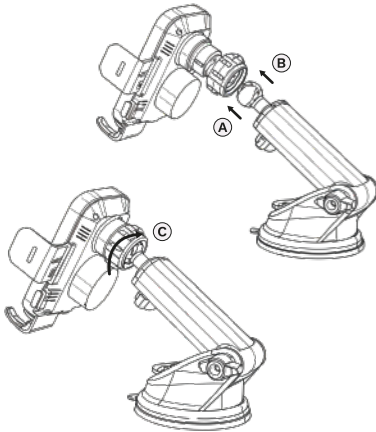
03



04

INSTRUCTIONS FOR USE

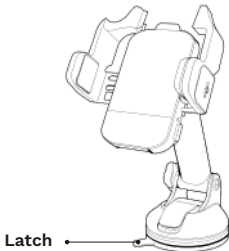
① Assemble charger.



05

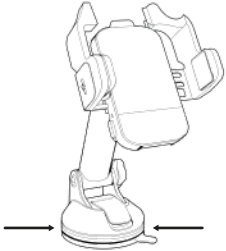
- A Put the nut to the ball head.
- B Install wireless charger into the ball head.
- C Tighten the nut.

② Pull the latch up.



06

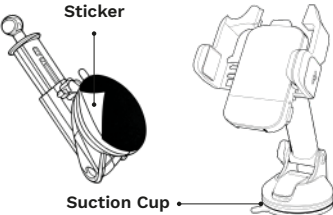
④ Press the edge of the sucker down with both hands to make the sucker stick to the adhesive surface.



07

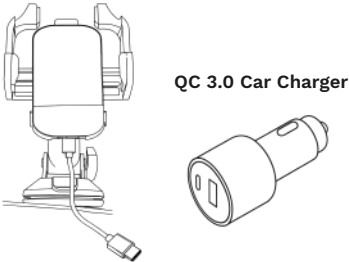
③ Remove the sticker from the suction cup and secure it to the dashboard or windshield as needed. Before pressing the lock, press the sucker down to make the sucker stick to the adhesive surface.

NOTE: Before installation, please ensure that the installation surface is flat and clean.



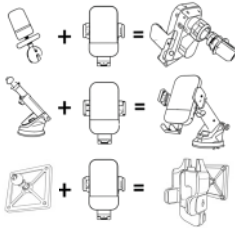
How to make it work well?

- 1. Use the cable that came with the package to connect the power supply.
- 2. Please use QC 3.0 car charger as its required source for fast charging mode.
- 3. The suction cup is suitable for smooth surfaces with no slope & dust, such as dashboards and glass, etc.



3-in-1

Clip to the vent

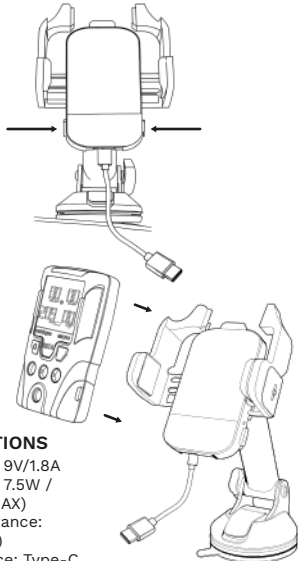


Install to the dashboard or windshield

Fixed mounting

AUTO CLAMPING FUNCTION

- 1. After connecting to the power and pressing the button on side, the arm clamp will open.
- 2. Placing the gas detector and the charger will automatically clamp and align to the charging area.



09

SPECIFICATIONS

Input: 5V/2A, 9V/1.8A  
Output: 5W / 7.5W / 10W / 15W (MAX)  
Charging Distance: 4mm (±1.6 in)  
Input Interface: Type-C

Power On	Red light stays on
Charging	Blue light stays on
Fault	Red light flashes

COMPATIBILITY:  
SST4 Micro  
SST4 Mini  
SST4 Pump  
SST5

EMEA  
Klaverbaan 121  
2908 KD  
Capelle aan den IJssel  
The Netherlands  
www.watchgas.com  
info@watchgas.com

ANZ  
aus@watchgas.com

Americas  
313 N. State Hwy 342  
Red Oak, TX 75154  
www.watchgasusa.com  
info@watchgasusa.com

APAC  
Woods Square Tower 1,  
12 Woodlands Square,  
#11-71, Singapore 737715

10