



WatchGas Probes

Embark on a journey of unparalleled safety and precision with WatchGas, where innovation meets reliability. Introducing our state-of-the-art Probe series, meticulously designed to elevate your gas detection experience.

At WatchGas, we understand the critical importance of early detection and accurate monitoring in hazardous environments. Our Probes stand as a testament to our commitment to safeguarding lives and preserving the integrity of your workspace.

Contents

Aluminum probe	3.
Aluminum Telescopic Probe	4.
Telescopic Probe (up to 4m.)	5.
Carbon Fiber Probe (approx 100cm)	7.
Multifunctional Container Probe (approx 40cm)	8.
Robust Container Probe (Stainless Steel)	9.
SST-Probe	9.
Mailbox Probe	10.
Rigid Rod Probe	11.
Last-O-More	13.
BallFloat	13.



Aluminum Probe

Fixed aluminium probe measuring approximately 26 cm.

It has an internal filter that can be replaced and provides additional protection against dirt and/or moisture.

It is supplied with 3-meter curling cord for flexible working and easy storage.

It can also be used in combination with a Last-O-More hose of any length.

Watertrap filters small (per 10 or 100 pcs.)

P/N PER 10:008-3022-010

P/N: PER 100: 008-3022-100



Part number: 008-3015-200

Aluminum Telescopic Probe



Extendable measuring probe which is easy to carry and store.

It can be extended to a length of about 30 cm and has a Teflon interior.

This Teflon liner/hose is easy to roll up using the supplied roll-up mechanism.

Part number: 008-3015-001

Telescopic Probe up to 4m.



Lockable extendable probe up to 4 meters

For light gases such as CH₄ and H₂.

Lockable with filter



Watertrap filters small (per 10 or 100 pcs.)

P/N PER 10:008-3022-010

P/N: PER 100: 008-3022-100

Part number: GSR-07



Carbon Fiber Probe

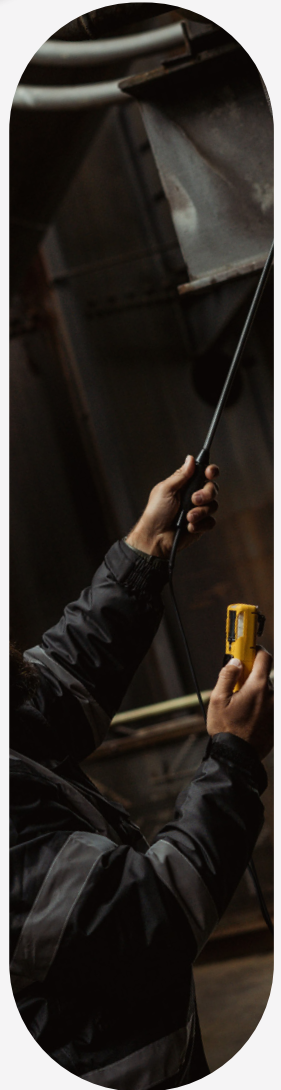
(approx 100cm)



Fixed probe (approx. 100cm) made of carbon fiber relative to common stainless steel variants.

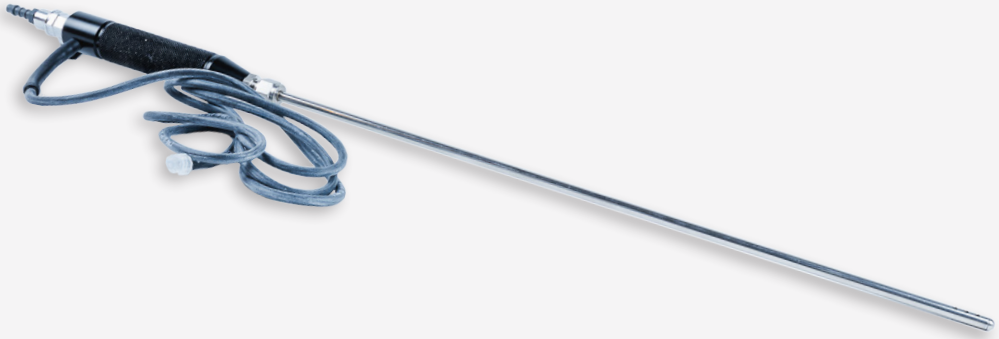
This is to prevent static electricity and the drawing of possible sparks.

Part number: GSR-02



Multifunctional Container Probe

(approx 40cm)



Specially developed probe for measuring containers.

This probe is easily pushed between the doors/rubbers of the container. By connecting a pumped detector, the air is drawn out of the container. This way you can keep the container doors closed and take the gas measurement safely in advance.

Should you want to perform a specific measurement on your PID sensor using a gas detection tube, this is also possible. At the back there is a connection by means of a ball valve, here you can also measure the air from the container by means of a detection tube with accompanying manual pump.

Part number: GSR-04-S-AK

Robust Container Probe

(Stainless Steel)



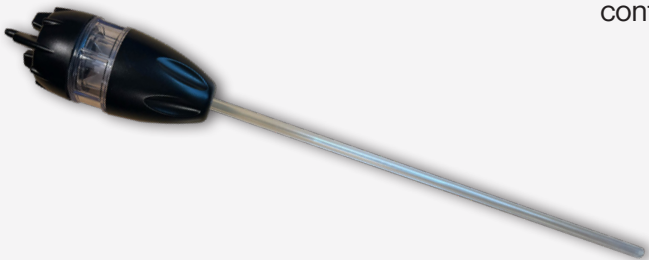
This robust probe with handle is meant to make it easier to carry out a container measurement.

The handle and the robust thickness of the probe make it even easier to place it inbetween the container doors.

Part number: RVS-G

SST-Probe

Sampling Probe compatible with the SST Range and other gas detection devices. Kit comes with hydrophobic and particulate filter probe is 0.3m/1 ft long and ideal for confined space entry sampling



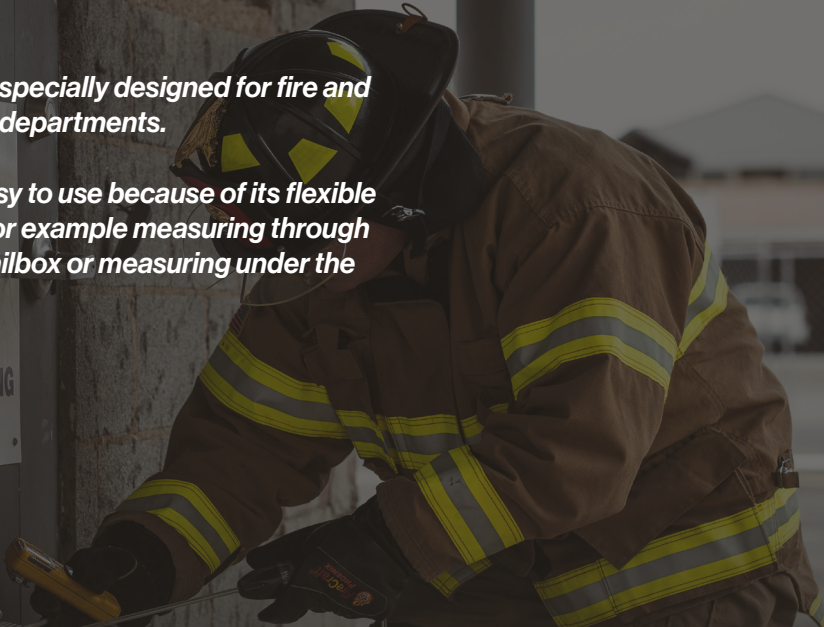
Part number: SST-Probe

Mailbox Probe

Probe specially designed for fire and police departments.

It is easy to use because of its flexible part, for example measuring through the mailbox or measuring under the door.

SIGNAL BUILDING
210 N. BIG SPRING
432-570-0171



Part number: 560051

Rigid Rod Probe

This probe is extendable and adaptable to customer requirements.

Standard equipped with an internal last-o-more hose which is also replaceable.



**Last-O-More Tubing 5x8 mm
P/N:411-0018-039**



**Last-O-More Tubing 3x5 mm
P/N:411-0018-038**



Part number: 800-0000-006



Your sample is as good as
your sampling equipment

For a confined space clearance measurement, a sampling hose is attached to a pumped gas detector. An open end of the hose, runs the risk of allowing dust and liquids to enter the sampling hose, blocking the hose and delaying the work.

Ball floats are a perfect way to ensure no liquid or dust can enter the sampling hose. WatchGas has completely redeveloped the ball float to make it suited to heavy duty work in every way. The ball float is made in one piece to make it more resistant and durable in comparison to ball floats that are made from two hemispheres glued together.

The material is chemical-resistant, antistatic and nonadsorbing; therefore, it does not interfere with your measurement. Also, its bright yellow colour makes it visible, providing contrast in dimly-lit situations.

WatchGas Last-O-More Sampling Hose offers the best performance for the price. It has low adsorption, so you get accurate results. Gas chromatography analysis shows a low adsorption on benzene. Low adsorption means high accuracy. Other gas types show similar results. The hose is covered in an anti-tangle agent so it is easy to detangle. Available in two sizes: 3x5mm and 5x8mm and to any desired length.



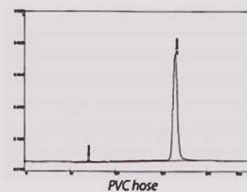
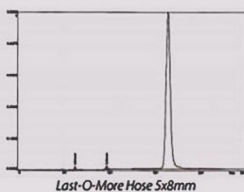
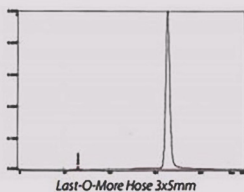
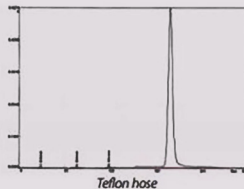
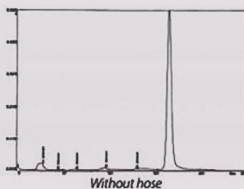
Ballfloat P/N: 7182112



Last-O-More Tubing 3x5 mm
P/N:411-0018-038



Last-O-More Tubing 5x8 mm
P/N:411-0018-039



Contact information

Europe

Klaverbaan 121
2908 KD Capelle a/d IJssel
The Netherlands

info@watchgas.com
www.watchgas.com

APAC

Woods Square Tower 1,
12 Woodlands Square,
#11-71, Singapore 737715

+65 65179551
info@watchgas.com
www.watchgas.com

Americas

313 N. State Hwy 342
Red Oak, TX 75154, USA

info@watchgasusa.com
www.watchgasusa.com