

# SST Dock

## Quick Start Guide

SST Dock | QSG | V 1.0 | EN | 15-06-23



## CAUTIONS & BEST PRACTICES

- If the SST Dock appears to be damaged or is not functioning properly, please contact WatchGas or a local WatchGas distributor.
- SST Dock uses Calibration Gas to carry out testing and calibrations so always ensure that these tests are done in a well-ventilated area.
- Always ensure filters are clean and replaced on a regular basis.
- Avoid the station encountering liquids. SST Dock cannot be mounted in an outdoor location that could be exposed to rain or wet conditions.
- The maximum exhaust tubing length is 10 meters (30 feet).
- Always use the SST Dock in conjunction with a demand flow regulator.
- SST Dock has **no** hazardous location approvals and can only be used in a safe and non-hazardous environment known to be free of toxic and/or flammable gas.
- Servicing can only be carried out by a WatchGas office or trained service technician.
- Ensure calibration gas cylinders are the correct concentration, within their expiration date and contain gas. Failure to do so may result in an incorrect calibration.
- The warranty does not cover electrical surges, physical and/or water damages.
- 



## WARNING

### IMPORTANT SAFETY INFORMATION: READ FIRST

- To ensure personal safety, read Safety Information and Warnings **before** using the SST Dock.
- Use the SST Dock only as specified by the manufacturer. Failure to do so may impair the protection provided by the SST Dock. The safety and security of any system or network incorporating the SST Dock and its accessory components is the responsibility of the assembler of the system.
- Follow all required National Electric Codes (NEC) and safety codes.
- Do not attempt to adjust, disassemble, or service the equipment.
- Only use in a well-ventilated space, in normal atmosphere, with 20.9% Oxygen and a non-hazardous environment.
- Only use the supplied charging adapter, 12V 1.5A.
- Do not apply positive pressure to the gas inlets. Only use a demand flow regulator.



I/P: 12 V  1.5 A

L.P.S. 

## PREPARE FOR USE

- Use only Luer PG-63 for all gas inlets/outlets.
- Tubing diameter no less than 3mm (1/8 in) internal. The tubing should be suitable for the gas used, consult WatchGas for a proper Last-o-More tube or compatible tube.
- Only use Demand Flow Regulators from WatchGas compatible part list.  
**NOTE:** Only connect up to 10 meters (30 feet) of tubing on the fresh air inlet and outlet.
- Ventilation – the outlet should be routed to a ventilated area.
- Adjust the fresh air purge time accordingly.
- Ensure tubing and cables are properly installed.
- Use the shortest length of tubing possible.
- Ensure a fresh air inlet filter is installed.
- If potentially harmful gas is used for calibrations, users must read the MSDS of the gas connected. The SST Dock must be attached to a venting system or be used in a well-ventilated area.

# INTRODUCTION

The SST Dock is an automated test station that allows Bump and Calibration testing. It is compatible with the full SST Range in one module. It has the capability to be connected via Wi-Fi, BLE, or Cellular and allows for desk, wall, and hard case mounted dependent on your application. With two inlets it allows for calibration of the standard four gases plus another gas type. With built-in NFC it is easier than ever to assign gas cylinders to the correct gas in ports.

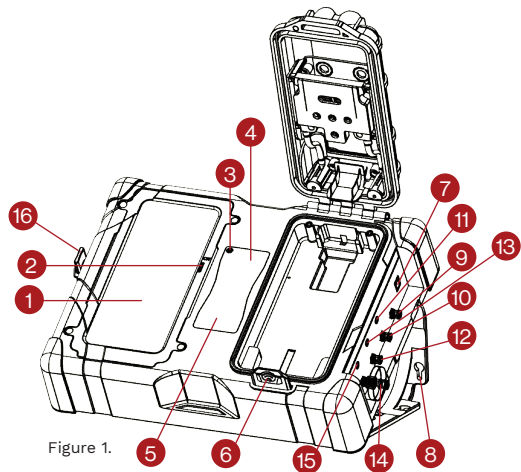


Figure 1.

## SST DOCK OVERVIEW

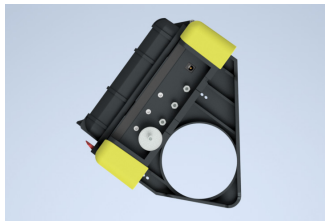
1. Touch screen
2. Touch screen ON / OFF
3. Status LED
4. Instruction label
5. Bottle NFC reader
6. Lid lock
7. Power supply
8. Mounting bracket table/wall mount
9. Exhaust outlet
10. Gas inlet 2
11. Gas inlet 2 pressure sensor connector
12. Gas inlet 1
13. Gas inlet 1 pressure sensor connector
14. Fresh air inlet filter
15. Fresh air inlet pressure sensor connector
16. ON / OFF key

## MOUNTING THE SST DOCK

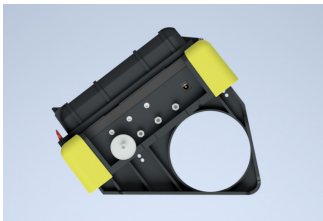
The SST Dock can be mounted with the invertible mounting bracket at 2 different angles. Use the extended screws and plastic spacer included in the box.

### Wall mounting

The provided mounting brackets can be used to mount the SST Dock to a wall or table. Mounting screws and plug are not provided. WatchGas recommends checking the strength of the mounting area and selecting the proper mounting hardware before mounting the SST Dock. Mounting the SST Dock should be performed by a qualified installation contractor.



SST Dock on a wall



SST Dock on a table



Installing the brackets

## SWITCH ON THE SST DOCK

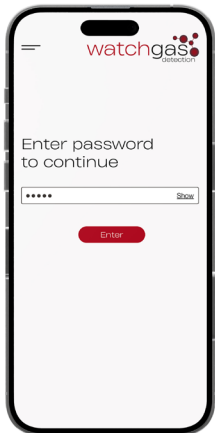
If the SST Dock is fully discharged, please allow 5 min of charging prior to switching on the unit. The LED will show **red** switching to **white** prior to start-up.

Connect the SST Dock to an electrical outlet (or surge protector) by means of the included power adapter. The Status light will then turn on. Use the ON / OFF key (fig 1. part 16 and part 2) to power on the touch screen.

# ENTER SET UP

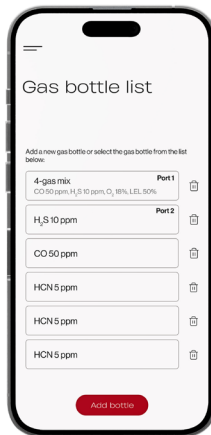
1. Use the Password “admin” to enter the setup menu

**IMPORTANT:** If optional pressure sensors are utilized these shall be activated or the SST Dock will ignore the signal

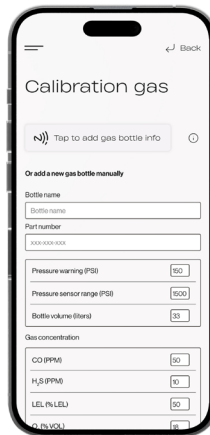


Enter the password

2. Add calibration gas bottle in the Gas bottle list either manually or utilizing Watch Tab enabled bottles. It is important to fill in all data as the Dock produces a full calibration certificate.



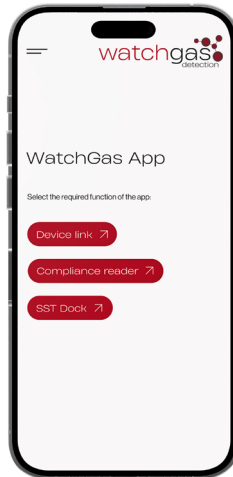
To add a new Calibration bottle click “Add bottle”



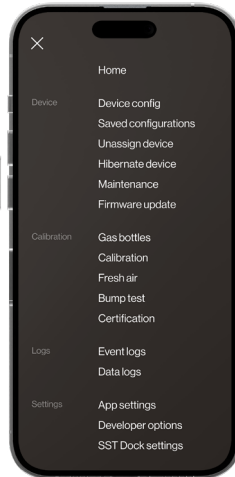
1. Assign the gas cylinder to the input port selected (the input will light up when the port is open during operation).  
**NOTE:** The SST Dock will not perform any bump or calibration if the gas does not match the detector target gas.
2. Status LED Green normal operation and on charge / yellow running on battery / red fault
3. Server setup – linking to the WatchGas compliance software the server ID must be set up. This link will be provided upon purchase of the software

## USE

If the touch screen is in sleep mode – double-tap the screen to wake up the unit. The screen will instruct the next step.



WatchGas App home screen



Bump & Calibration

# INSERTING THE DETECTOR

## Step 1

Power on the gas detector if required, if it is a 2- or 3-year SST1 then the device will already be activated. Turn on NFC.

## Step 2

Lift the lid on the SST Dock by using the two-finger guides and the red latch.

## Step 3

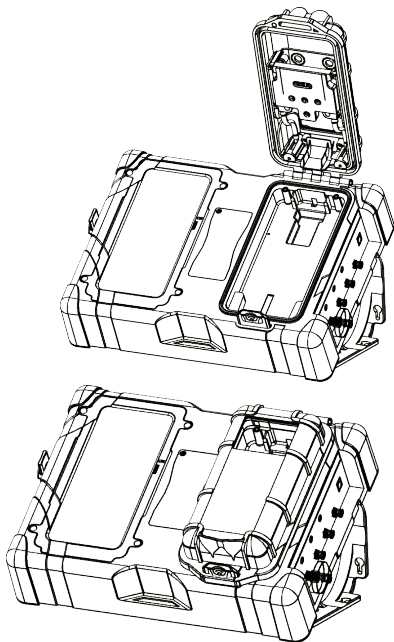
Insert the device by locating the alligator clip into the guide in the SST Dock.

## Step 4

Close the lid until you hear the click.



## Step 5

Select the function on the SST Dock display that you want to carry out: Bump Test, Calibration, or Fresh Air calibration. The SST Dock will then carry out the selected test.





# SPECIFICATIONS

<b>Dimensions (LxWxH)</b>	28 x 21 x 10 cm (11.5 x 8.5 x 4.5 in)
<b>Weight</b>	1.8 kg (4 lbs)
<b>Operating Temperature</b>	+5-40 °C (40-104°F)
<b>Humidity</b>	10% to 90% RH
<b>Storage Temperature</b>	0-50 °C (32-120°F)
<b>Power Supply</b>	12 V  1.5 A L.P.S. 
<b>Real Time Clock</b>	Yes, updatable
<b>Data Storage</b>	More than 1 year of operation
<b>Connection capability</b>	Wi-Fi, Cellular, BLE – Connected into the Cloud and WatchGas App
<b>Gas Inlets</b>	Fresh air inlet, 2 gas inlets and one purge
<b>Testing Function</b>	Bump Test, Calibration (optional), Device Configuration and Data Download. Also tests device Alarms, Visual LED's and Vibrator
<b>Device Compatibility</b>	One module compatible with SST Range
<b>Warranty</b>	2 Year warranty



## **WARNING**

**NO USER-SERVICEABLE PARTS INSIDE**

## MAINTENANCE

Periodically check that the inlet filter is free of dirt and replace it if required. SST Dock can be cleaned with a soft, damp cloth. Do not use solvents, soaps, polishes, or immerse the SST Dock in liquids. Completely turn off the unit and disconnect the power supply before cleaning.



## **WARNING**

**ONLY USE ORIGINAL WATCHGAS PARTS AND/OR ACCESSORIES**

## PARTS AND ACCESSORIES

Serviceable parts and accessories are sold separately. Please contact WatchGas or an authorized distributor, or visit the website at [www.watchgas.com](http://www.watchgas.com) or [www.watchgasusa.com](http://www.watchgasusa.com) if in North America.

### **Parts list**

- WatchGas Demand Flow Regulator (part number: DFR-SS)
- WatchGas Demand Flow Regulator including a pressure sensor (part number: DFR-PSV)
- PG-63 Luer (part number: SST-DOCK-LUR)
- Tubing
- Mounting brackets, spacers, and screws (part number: SST-DOCK-MB)

# TROUBLESHOOTING

## **Detector fails bump, fresh air, or calibration:**

1. If fresh air fails, verify the filter is not clogged and the air at the inlet is not contaminated.
2. Check that gas bottles are connected, sufficiently pressurized, and contain the right gas concentration. (information on the bottle)
3. Verify the station function with a known functional detector.

## **Detector fails alarm test:**

1. Redo the test
2. Manually inspect the detector for LED, vibration, and audio alarms
3. Test a known fully functional detector in the station to verify station function

## **Station fail:**

1. Clear fault and retry
2. Contact service representative

# CONTACT INFORMATION

Klaverbaan 121, 2908 KD, Capelle a/d IJssel, the Netherlands  
info@watchgas.com | www.watchgas.com

313 N. State Hwy 342, Red Oak, Texas 75154, United States  
info@watchgasusa.com | www.watchgasusa.com