

# USER MANUAL



# POLI

## 4-Way Charger

## Contents

Contents	2
Important! Read before use	3
Description	3
Repairs	3
Disposal	3
Specifications	3
Limited Warranty	4

## IMPORTANT! READ BEFORE USE

All persons responsible for the operation, maintenance and repair of this product must read this manual carefully. The product will function in accordance with the specifications only if it is operated, maintained and repaired in accordance with the manufacturers instructions.

## Description

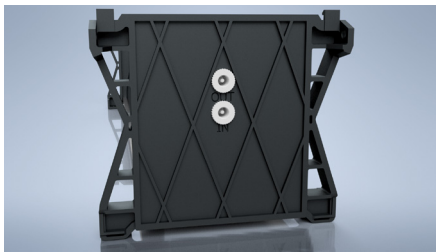
1. This product is designed to charge up to 4 WatchGas POLI Gas detectors at the same time.
2. Please use charger P/N:7177214.
3. After connecting slide in the POLI which is needed to be charged and connect Micro USB.

Please use charger P/N:7177214.



## Warning

Never charge a different Micro USB Device as the voltage is too high and could damage your device.



Connect the charger (P/N:7177214) to the input port

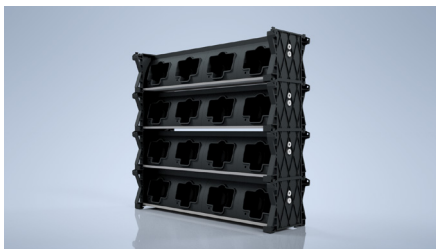
Link up to 4 charging cradles with the (Optional) Link cable (7177215). Connect from output port to second cradle's input port



Only use Charger (P/N:7177214) in combination



Mount charging cradle to desk or wall use recommended 4.8mm mounting screws



Stackable up to four chargers



It is also possible to charge up right

## Repairs

Internal and external modifications to the device can be dangerous, and are prohibited. Should a defect occur, please contact our service department for assistance.

## Disposal

Dispose of materials in accordance with the relevant legal requirements. You may return the charging cradle to your distributor for safe dismantling and disposal.

## Specifications

- Charge up to 4 POLI devices
- Input power 12V DC 6.5A
- Operating temperature range 0°C to +35°C
- Made in The Netherlands

## Limited Warranty

WATCHGAS warrants this product to be free of defects in workmanship and materials-under normal use and service-for two years from the date of purchase from the manufacturer or from the product's authorized reseller.

The manufacturer is not liable (under this warranty) if its testing and examination disclose that the alleged defect in the product does not exist or was caused by the purchaser's (or any third party's) misuse, neglect, or improper installation, testing, or calibrations. Any unauthorized attempt to repair or modify the product, or any other cause of damage beyond the range of the intended use, including damage by fire, lightening, water damage or other hazard, voids liability of the manufacturer.

In the event that a product should fail to perform up to manufacturer specifications during the applicable warranty period, please contact the product's authorized reseller or WATCHGAS service center at +31 (0)85 01 87 709 for repair/return information.



**WatchGas B.V.**  
Klaverbaan 121  
2908 KD Capelle aan den IJssel  
The Netherlands  
+31 (0)85 01 87 709  
info@watchgas.eu - www.watchgas.eu

All rights reserved. No part of this publication may be reproduced, distributed, or transmitted in any form or by any means, including photocopying, recording, or other electronic or mechanical methods, without the prior written permission of the publisher, except in the case of brief quotations embodied in critical reviews and certain other noncommercial uses permitted by copyright law. For permission requests, contact WatchGas B.V.

V1.2  
28-07-2021