

Users can change settings, upgrade firmware, download log events, and perform calibration with the WatchGas IR Link.

Getting Started

To interact with WatchGas QGM or PDM, ensure to install the software and have the link cable plugged into the computer. And, place the topside of WatchGas QGM or PDM to the IR Link LCD.

WatchGas PDM QGM IR Link PC v1.7.3

File Tools Help

File

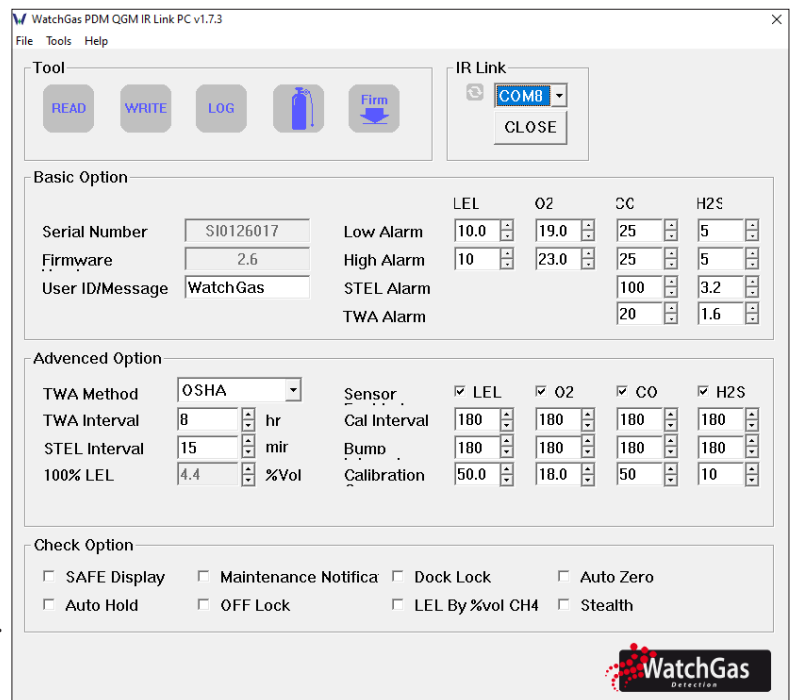
- Load: Open the installed settings. (*.cfg)
- Save: Save the current settings. (*.cfg)
- Exit: Close the program.

Tools

- Calibration: Perform the zero/span calibration.
- Log Read: Retrieve the log events.
- Log Erase: Erase the log events.
- Self Test: Test if LED, LCD, Buzzer, vibration, battery and temperature works properly.
- FW Upgrade Users can upgrade firmware.
- The up- to-date firmware is available at our WatchGas website
- Factory Fault: Remove all data and restore the initial factory settings.

Help

About: Display a brief company profile.



Tool

- **READ:** Retrieve the settings.
- **WRITE:** Update the adjusted settings. LOG: Display the saved log events.
- **CALIBRATION:** Perform the zero and span calibration.
- **FIRMWARE UPGRADE:** Upgrade firmware.

IR Link

- **OPEN:** In order to interact the IR Link with QGM and PDM click on 'OPEN. When the read is activated successfully. Users will see "Read Complete".

PDM - PDM+

Serial	SI1024164	Sensor	CO
Firmware	1.2.5	Low	25
User		High	25
Display	Sensor Reading	STEL Alarm	n/a
Stealth	Off	TWA	n/a
Self Test(hour)	n/a	Cal	50
		Cal Time(sec)	90
		Cal Interval(day)	180
		Bump	180



PDM and PDM+

- **SERIAL NUMBER:** Display a preset serial number.
- **FIRMWARE VERSION:** Display a firmware version (EX. 1.x.x) .
- **USER ID/MESSAGE:** Users can program a desired message/ID.
- **DISPLAY:** Users can choose to display either the real time "Sensor Reading" or "Sensor Life remaining".
- **STEALTH (OPTION):** Users can turn off the buzzer, LED, and vibration.
- **SELF TEST (HOUR):** Set an interval of the self-test alert.
- **SENSOR TYPE:** Display a sensor type of the device.
- **LOW ALARM:** Adjust the low alarm set point in compliance with international or local standards.
- **HIGH ALARM:** Adjust the high alarm set point in compliance with the international or local standards.
- **CAL CONCENTRATION:** Set a standard calibration value.
- **CAL TIME (SEC):** Set a standard calibration time.
- **CAL INTERVAL (DAY)** Set an interval of the calibration alert.
- **BUMP INTERVAL (DAY)** Set an interval of the bump test alert.
- **STEL ALARM:** Adjust the STEL alarm set point in compliance with international or local standards.
- **TWA:** Adjust the TWA alarm set point in compliance with international or local standard

Basic Option

Serial Number	SI0126017	Low Alarm	LEL 10.0	O2 19.0	CO 25	H2S 5
Firmware	2.6	High Alarm	10	23.0	25	5
User ID/Message	WatchGas	STEL Alarm			100	3.2
		TWA Alarm			20	1.6

Advanced Option

TWA Method	OSHA	Sensor	<input checked="" type="checkbox"/> LEL	<input checked="" type="checkbox"/> O2	<input checked="" type="checkbox"/> CO	<input checked="" type="checkbox"/> H2S
TWA Interval	8 hr	Cal Interval	180	180	180	180
STEL Interval	15 min	Bump	180	180	180	180
100% LEL	4.4 %Vol	Calibration	50.0	18.0	50	10

Check Option

- SAFE Display Maintenance Notification Dock Lock Auto Zero
 Auto Hold OFF Lock LEL By %vol CH4 Stealth



QGM

- **SERIAL NUMBER:** Display a preset serial number.
- **FIRMWARE VERSION:** Display a firmware version (EX. 1.x.x) .
- **USER ID/MESSAGE:** Users can program a desired message/ID.
- **DISPLAY:** Users can choose to display either the real time "Sensor Reading" or "Sensor Life remaining".
- **STEALTH (OPTION):** Users can turn off the buzzer, LED, and vibration.
- **SELF TEST (HOUR):** Set an interval of the self-test alert.
- **SENSOR TYPE:** Display a sensor type of the device.
- **LOW ALARM:** Adjust the low alarm set point in compliance with international or local standards.
- **HIGH ALARM:** Adjust the high alarm set point in compliance with the international or local standards.
- **CAL CONCENTRATION:** Set a standard calibration value.
- **CAL TIME (SEC):** Set a standard calibration time.
- **CAL INTERVAL (DAY):** Set an interval of the calibration alert.
- **BUMP INTERVAL (DAY):** Set an interval of the bump test alert.
- **SAFE DISPLAY:** Display only SAFE. Gas reading will only be displayed if above alarm limits
- **MAINTENANCE NOTIFICATION:** Notice when detector needs maintenance
- **DOCK LOCK:** Manual calibration disabled. Calibration can only be preformed by docking station.
- **AUTO ZERO:** Preform zero calibration on start-up.
- **AUTO HOLD:** Device will be in alarm mode until button is pressed.
- **OFF LOCK:** Device cannot be turned off (not recommended for catalytic type).
- **LEL BY VOL CH4:** Change 100 %LEL to vol% value.
- **STEALTH** Stealth mode. Warning: device will not give any alarm if concentrations exceed alarm limits!